

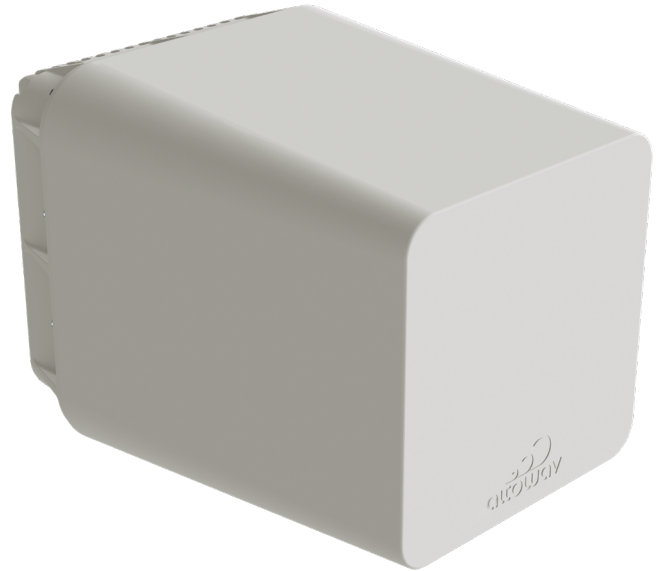
AltoReach S150

60GHz Outdoor Wireless Network Long Range Remote Station

The S150 is a 60GHz radio with an integrated 150mm high-gain antenna that provides best-in-class range in a compact form factor. It can be configured as a PtMP remote station, or a pair can be setup as a PtP link.

The S150 is built-to-last and features IP67 weather-sealing for reliable operation outdoors and in harsh environments.

Models with GPS, Backup Link, and Wi-Fi Management features available Q4-2025.



Early units may vary in appearance

High Capacity

Up to 2Gbps+ aggregate.

Low Latency

Sub 1ms latency.

Adaptive Beamforming

Phased array, beamforming antenna with 4° azimuth and 4° elevation scanning for simplified installation of a long-range 60GHz link.

2.5 Gigabit Ethernet

Built-in 2.5GbE port for maximum throughput.

Backup Link and Wi-Fi Management (Q4-2025)

The S150 includes a IEEE 802.11be 5/6GHz backup connection for increased link resiliency. The S150 also features a 2.4GHz local Wi-Fi interface for direct radio management.

Long Range

The S150 delivers best-in-class range using its integrated high-gain antenna plus support for 60GHz channels 5 and 6.

Security

AltoReach radios feature AES 128 encryption for 60GHz and AES 256 encryption for 802.11be communication.

Carrier-Grade

IP67 rated enclosure and designed for reliable, long-term operation in the field.

Simple and Rapid Installation

Altowav's Open API and native layer 2 architecture enable easy integration into operators' existing networks.

Specifications

SYSTEM

Configuration	Point-to-Point and Point-to-Multipoint AP or Remote Station
Frequencies	57 - 71GHz
Channel Bandwidths	6 non-overlapping 2.16GHz channels
Duplexing	TDD
Modulation and Coding Schemes	12 levels, adaptive—MCS-0 (BPSK) to MCS-12 (16QAM)
Antenna	Integrated 150mm 37.5dBi antenna with 4° x 4° beamforming scanning range
Maximum EIRP Range	55dBm Up to 3 miles (5km) MCS8 PtP Up to 1.1 miles (1800m) MCS-8 PtMP with AP90
Capacity Ethernet Frame Type	Up to 2Gbps+ aggregate Transparent bridging of all Ethernet types including VLAN and VLAN stacking
Latency	< 1ms
L2 switching	Complete Layer 2 switching, including VLAN support
Security	AES 128 on 60GHz AES 256 on IEEE 802.11be
Fail-over Link (Q4-2025)	IEEE 802.11be 5/6GHz wireless fail-over radio link
Wi-Fi Management Interface (Q4-2025)	IEEE 802.11be 2.4GHz wireless management interface radio link (not intended for use as a Wi-Fi data AP)
Location (Q4-2025)	Integrated GPS receiver to locate individual radios

CONNECTIVITY

Ethernet	1 x 2.5GbE RJ45
Voltage	56VDC
PoE Input	802.3at+
Power Consumption	25W maximum

MANAGEMENT

Management	Web GUI, CLI, REST API and AltoCommand (optional)
-------------------	---

MECHANICAL

Dimensions (H x W x D)	5.1" x 4.7" x 7" (130 x 120 x 178mm)
Weight	16.8oz (475g)
Operating Temperature	-40° to +131°F (-40° to +55°C) -22°F (-30°C) cold start
Ingress Protection	IP67
Regulatory	FCC, ISED, CE

MODEL NUMBER

AR-S150-C-G	S150 60GHz Long Range Remote Station Radio
--------------------	--

INCLUDED ACCESSORIES

AX-P-IN-AT-5G-US	Indoor 802.3at (30W) 5GbE PoE injector with 0.8m US power cord
-------------------------	--

ACCESS POINT MODEL NUMBERS

AR-AP90-C-G	AP90 60GHz Access Point Radio
--------------------	-------------------------------

OPTIONAL ACCESSORIES

AR-MK-T1-EXT	Precision mounting kit for AltoReach radios
AX-PSW-OD-4AT-4C25	Outdoor 4 port PoE 2.5GbE switch
AX-PSW-OD-MOUNT	Pole mount bracket for Outdoor PoE switch